

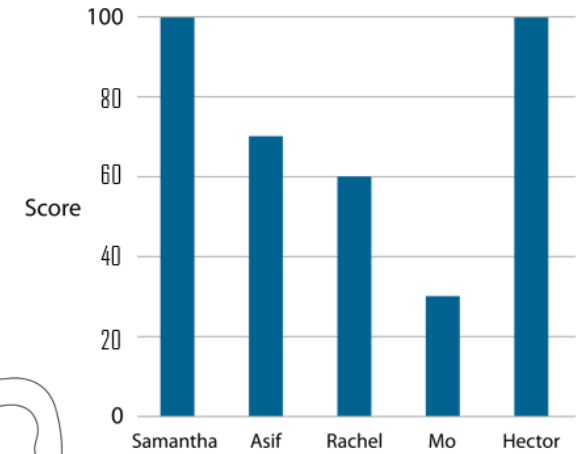
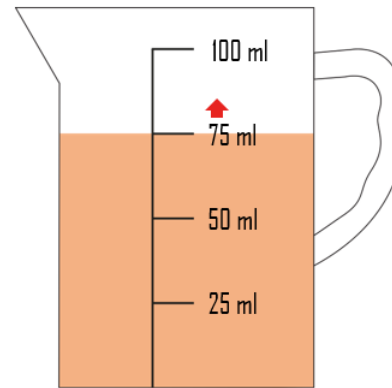
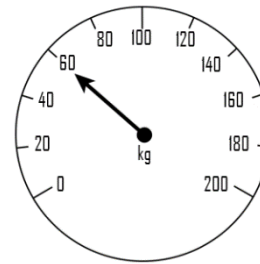
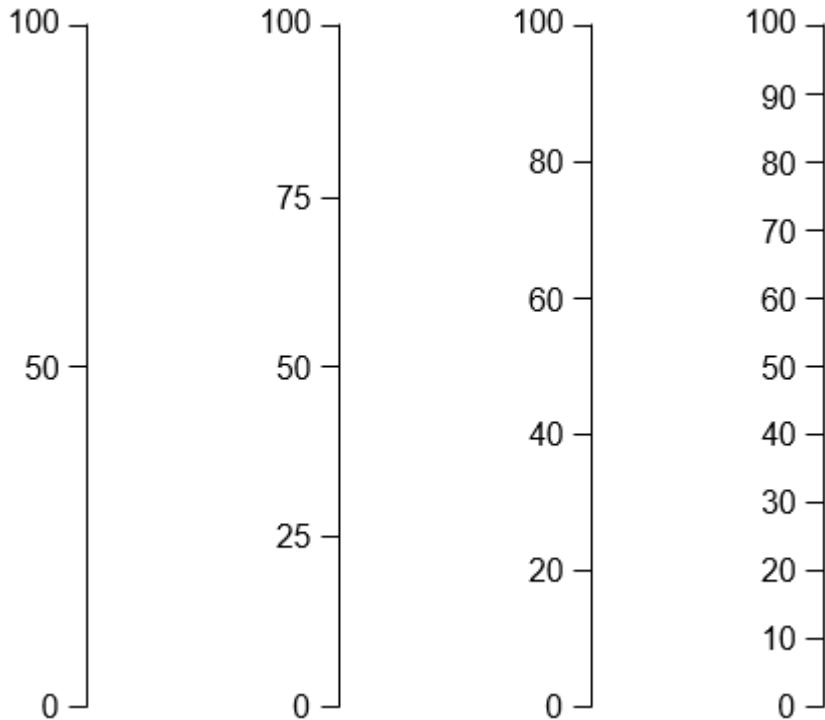
Number and Place Value

Year 3

Reading Scales with 2, 4, 5, or 10 intervals

Vocabulary:

Intervals Scales Divisions Equal Parts Whole Value
Bar model Plus Minus Multiply Divide



Count using these intervals in both horizontal and vertically linear scales.

Find the value of a scale with missing numbers and read scales with numbers included in a variety of contexts.

Number and Place Value

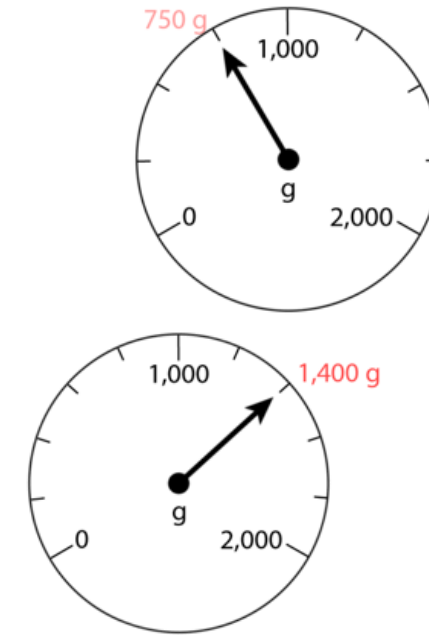
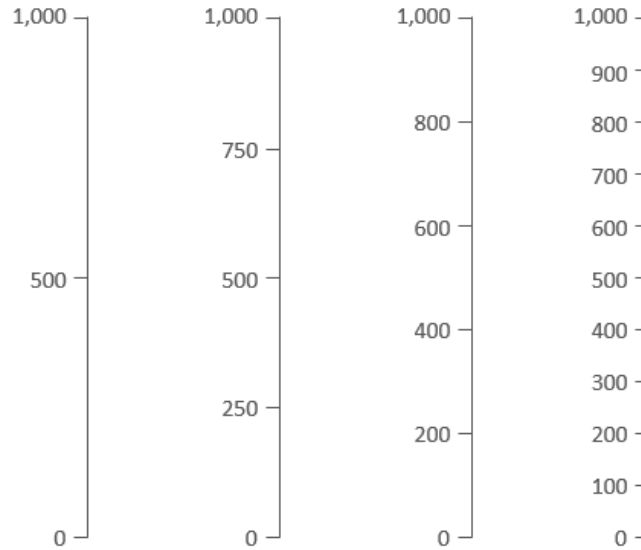
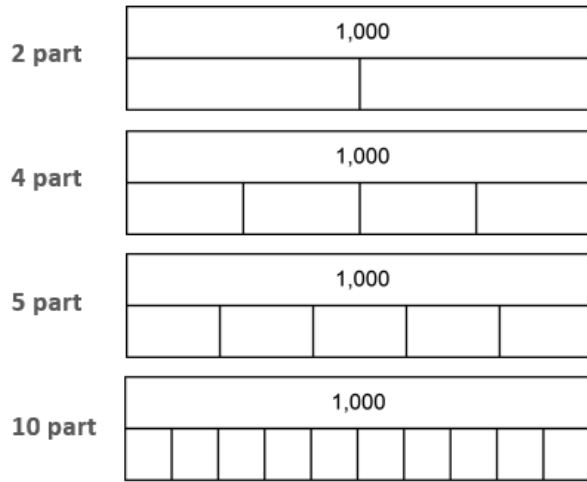
Year 4

Reading scales with intervals of 2, 4, 5 or 10.

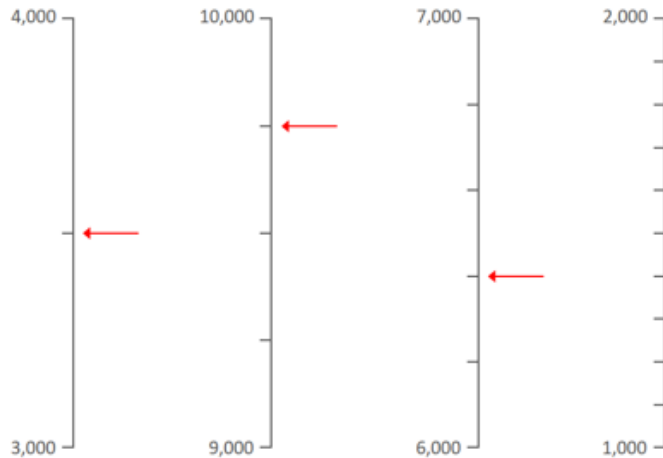
Vocabulary:

Intervals Scales Divisions Equal Parts Whole Value
 Bar model Plus Minus Multiply Divide Bar graph Grams

2, 4, 5 and 10 part composition of 1,000

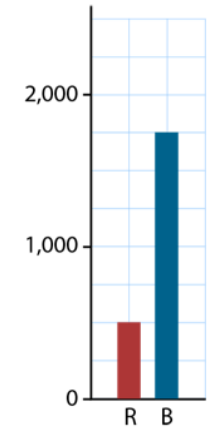
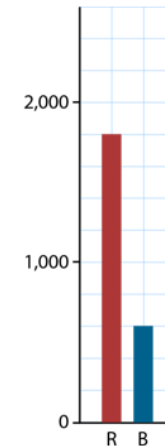


Use the number of intervals given to find values in other contexts (e.g. weighing scales/bar graphs)



wards using these intervals with both cal number lines.

Use the number of intervals given to find the numbers that the arrows are pointing to.



Number and Place Value

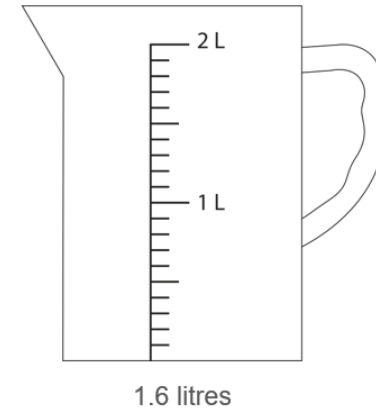
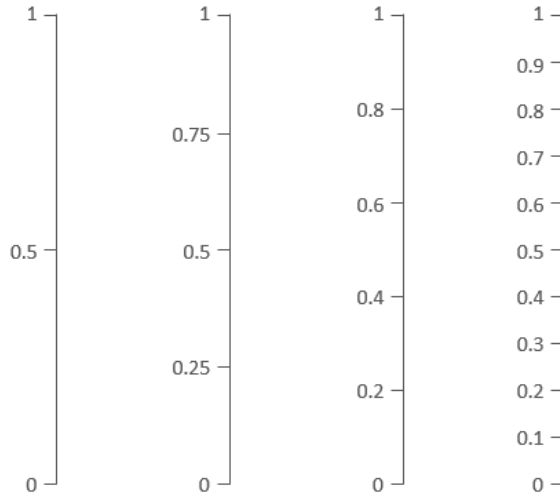
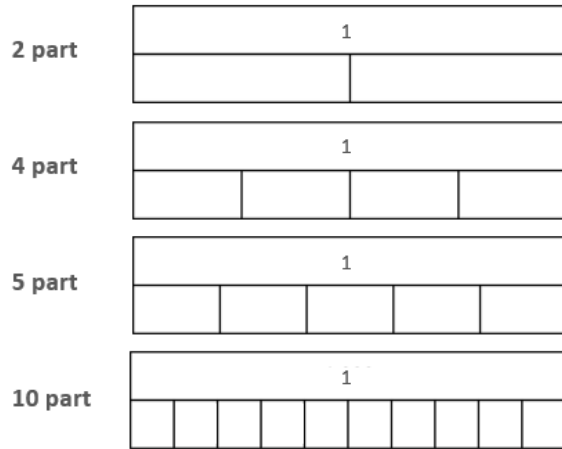
Year 5

Reading Scales with 2, 4, 5, or 10 intervals

Vocabulary:

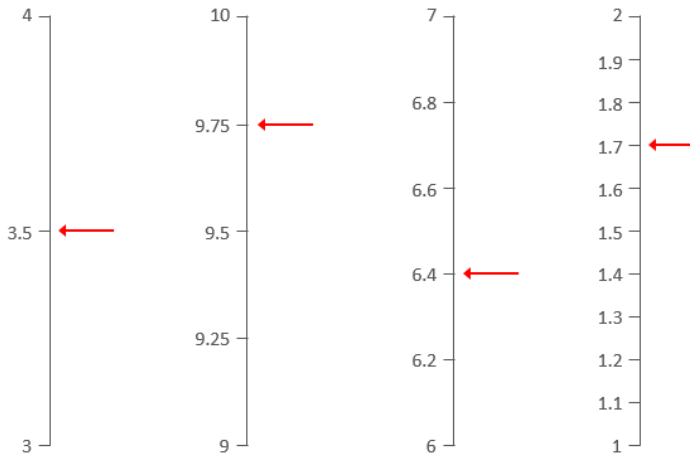
Intervals	Scales	Divisions	Equal Parts	Whole	Value		
Bar model	Plus	Minus	Multiply	Divide	Grams	Millilitres	Litres
Grams	Kilograms	Metres	Centimetres	Estimate			

2, 4, 5 and 10 part composition of 1

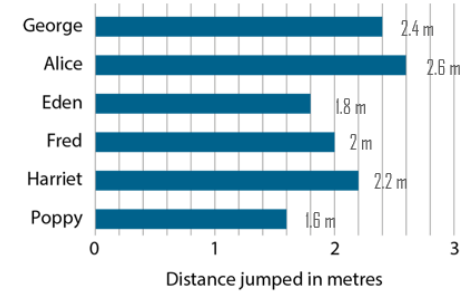
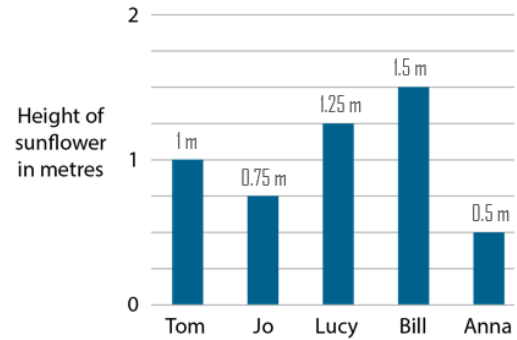
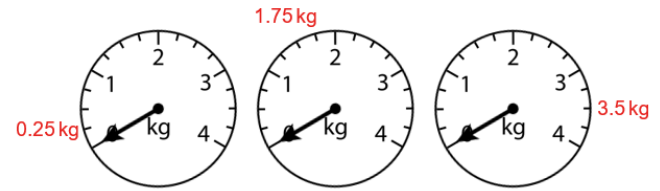


Use the number of intervals given to find values in other contexts (e.g. weighing scales/bar graphs)

Identify intervals and count forwards/backwards using these intervals with both bar models and vertical number lines.



Use the number of intervals given to find the numbers that the arrows are pointing to.



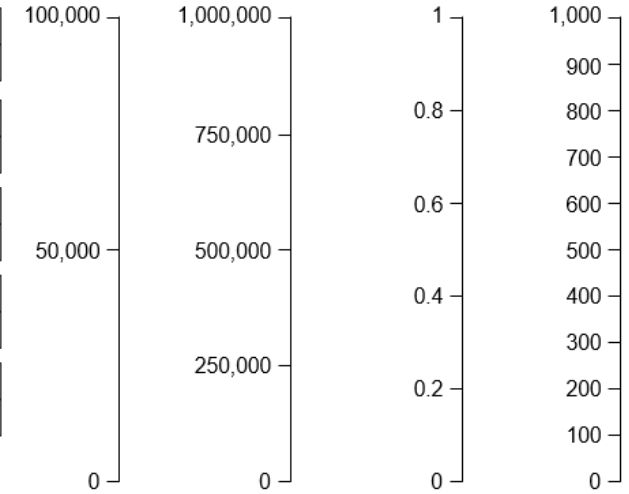
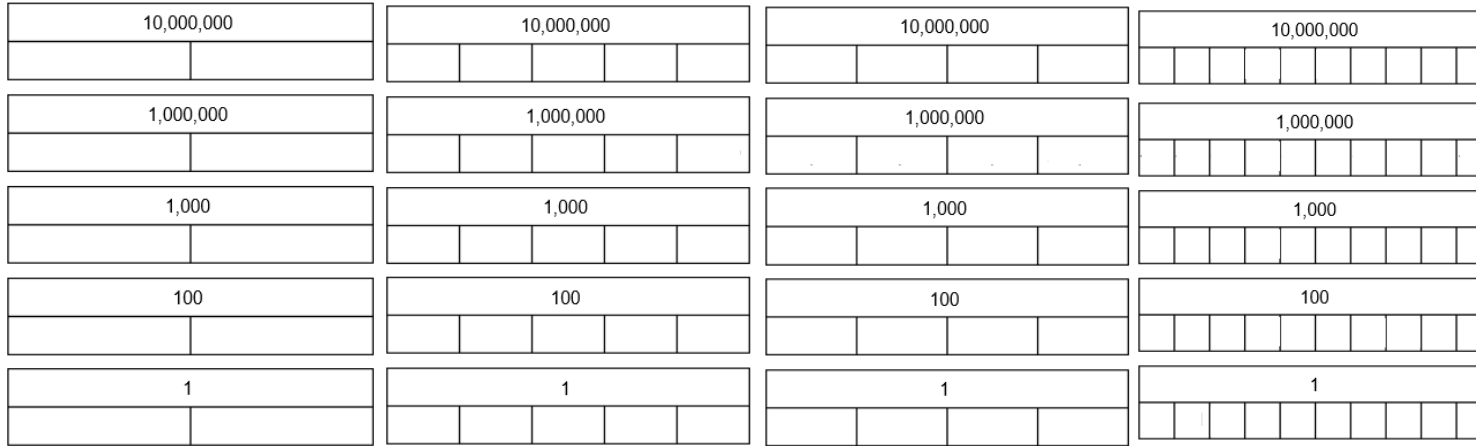
Number and Place Value

Year 6

Reading Scales with 2, 4, 5, or 10 intervals

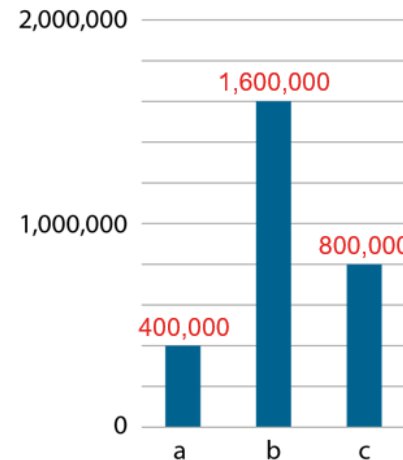
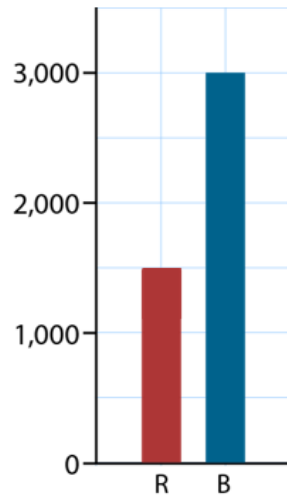
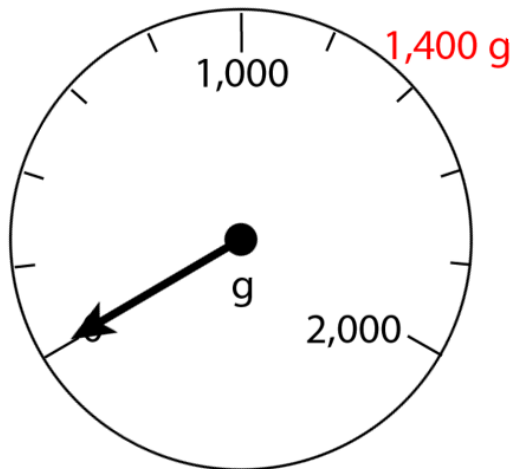
Vocabulary:

Ones Tens Hundreds Thousands Ten-thousands Hundred-thousands Millions Ten-Millions
 Tenths Hundredths Represents Digit Place Value Intervals Scales Divisions
 Equal Parts Whole Value Bar model Plus Minus Multiply Divide Grams
 Millilitres Litres Grams Kilograms Metres Centimetres Estimate



Make connections with different wholes when dividing these into 2, 4, 5, and 10 equal parts.

Identify intervals and count forwards/backwards using these intervals with both bar models and vertical number lines.



Use the number of intervals given to find values in other contexts (e.g. weighing scales/bar graphs)